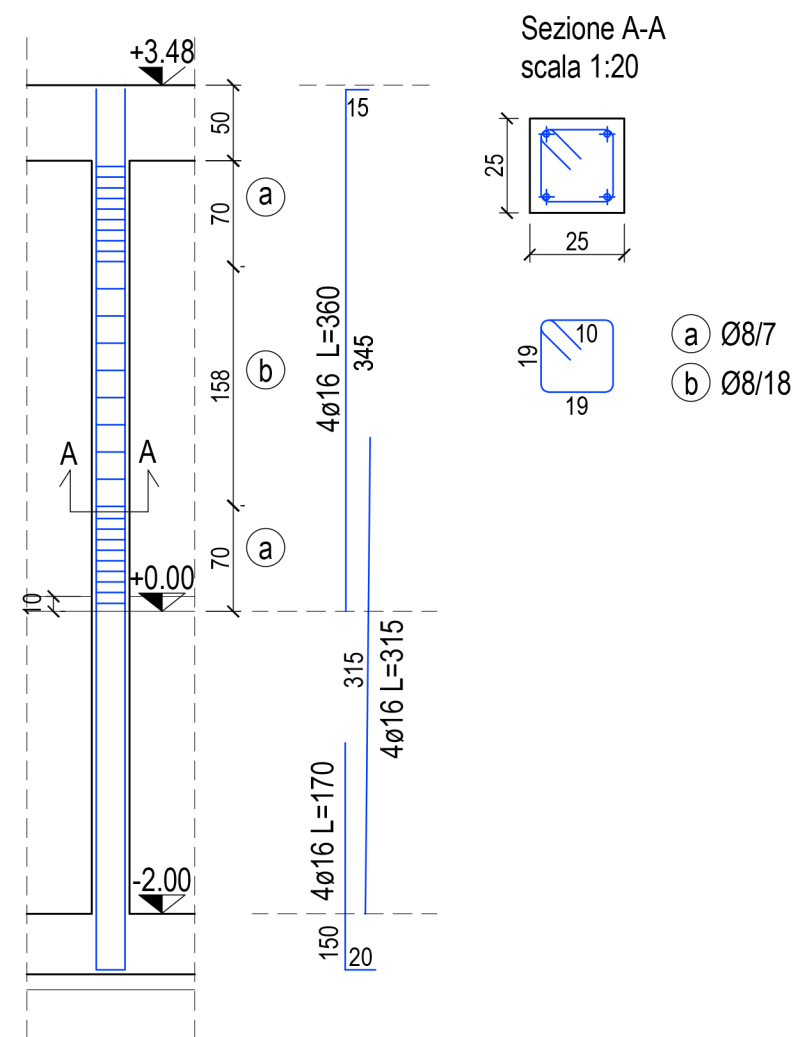
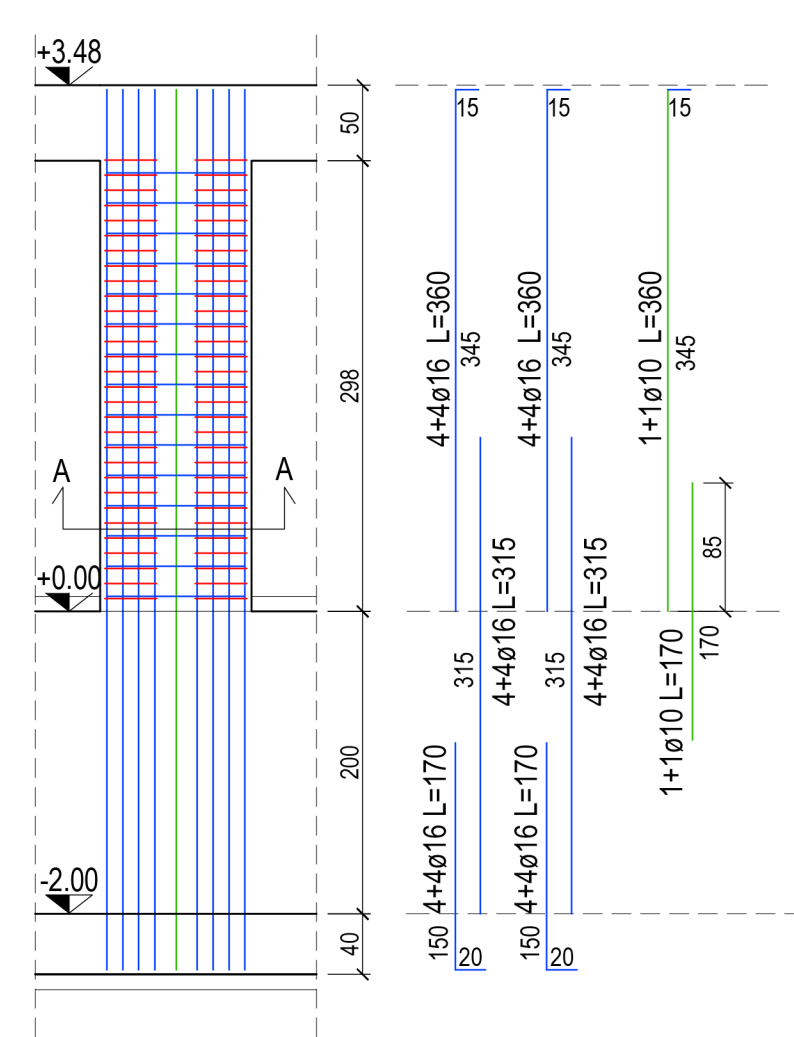


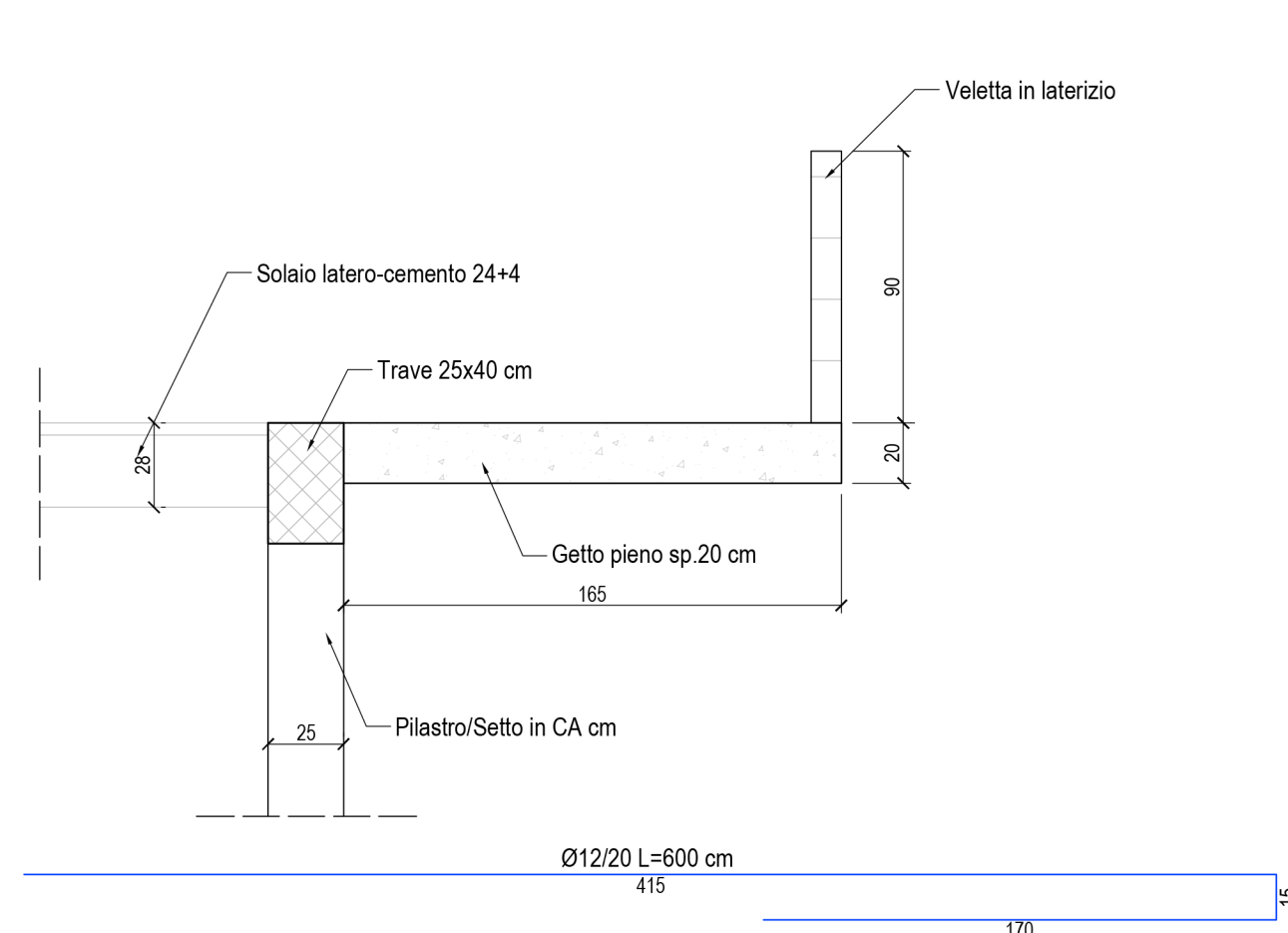
Scala 1:50



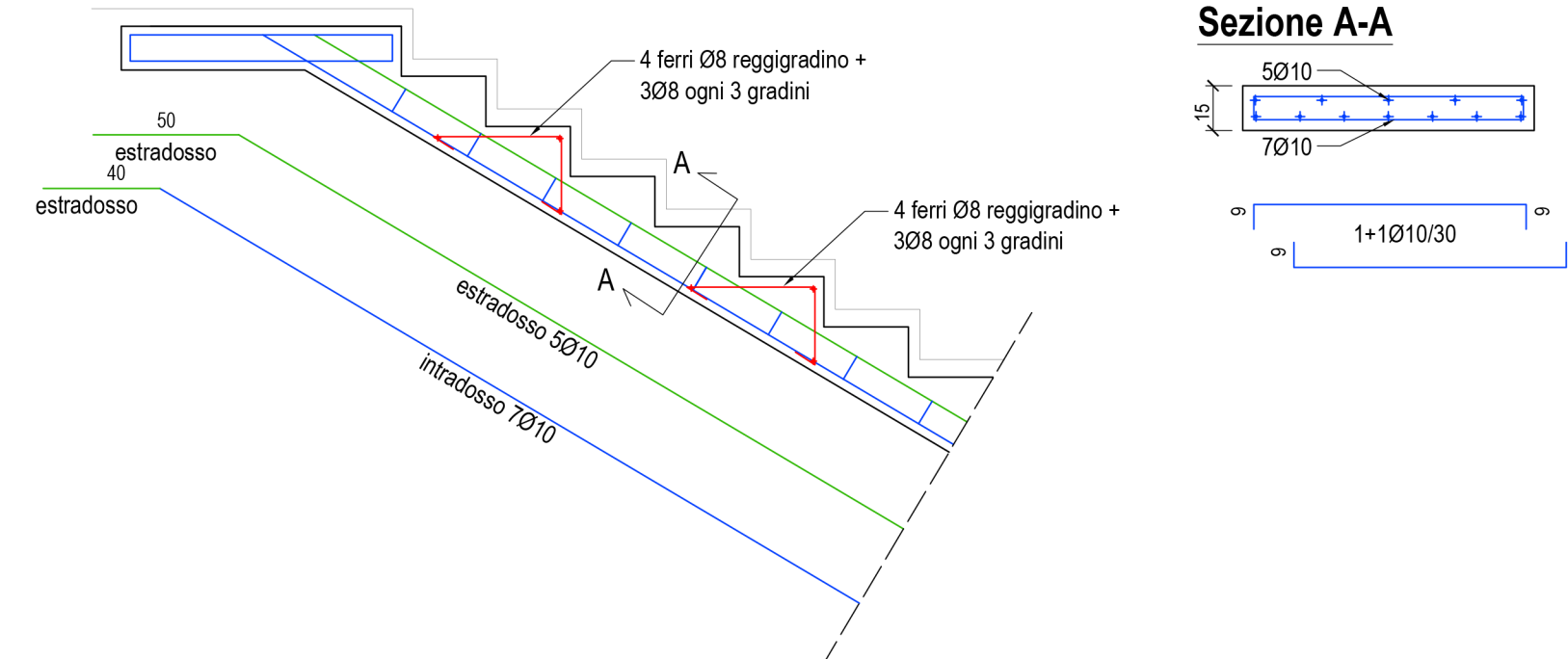
Scala 1:50



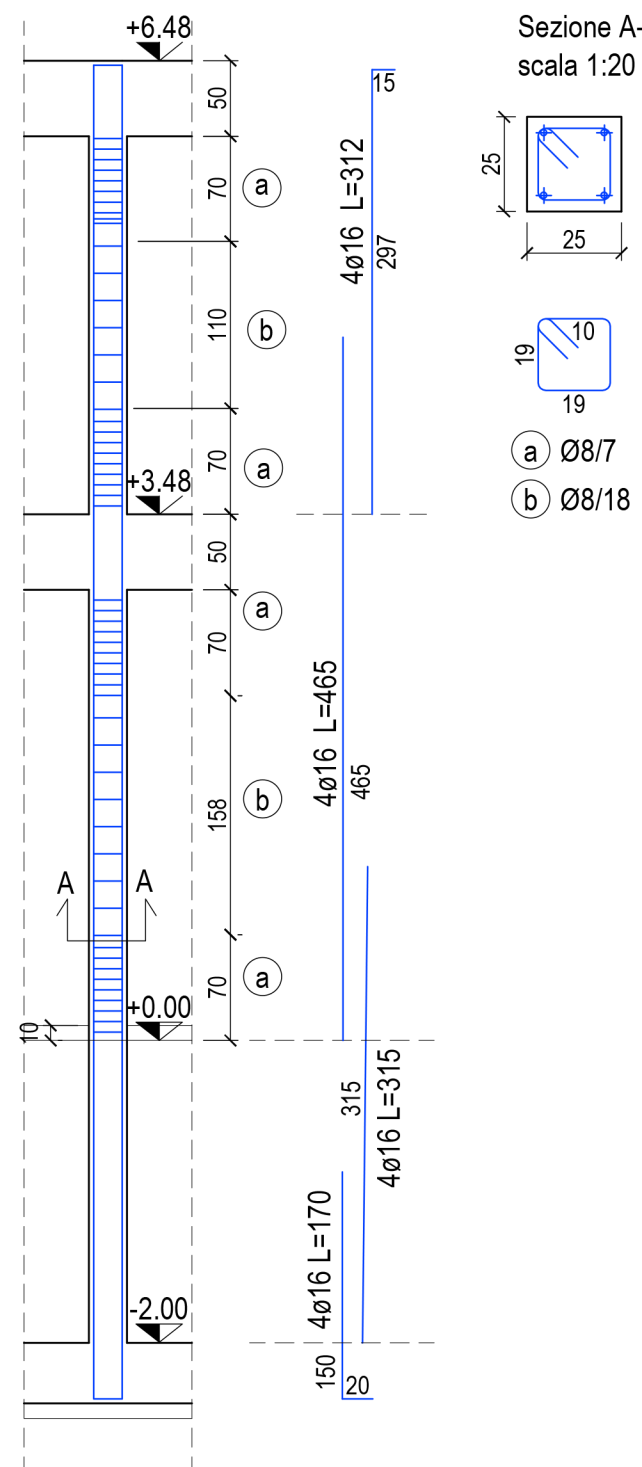
Scala 1:25



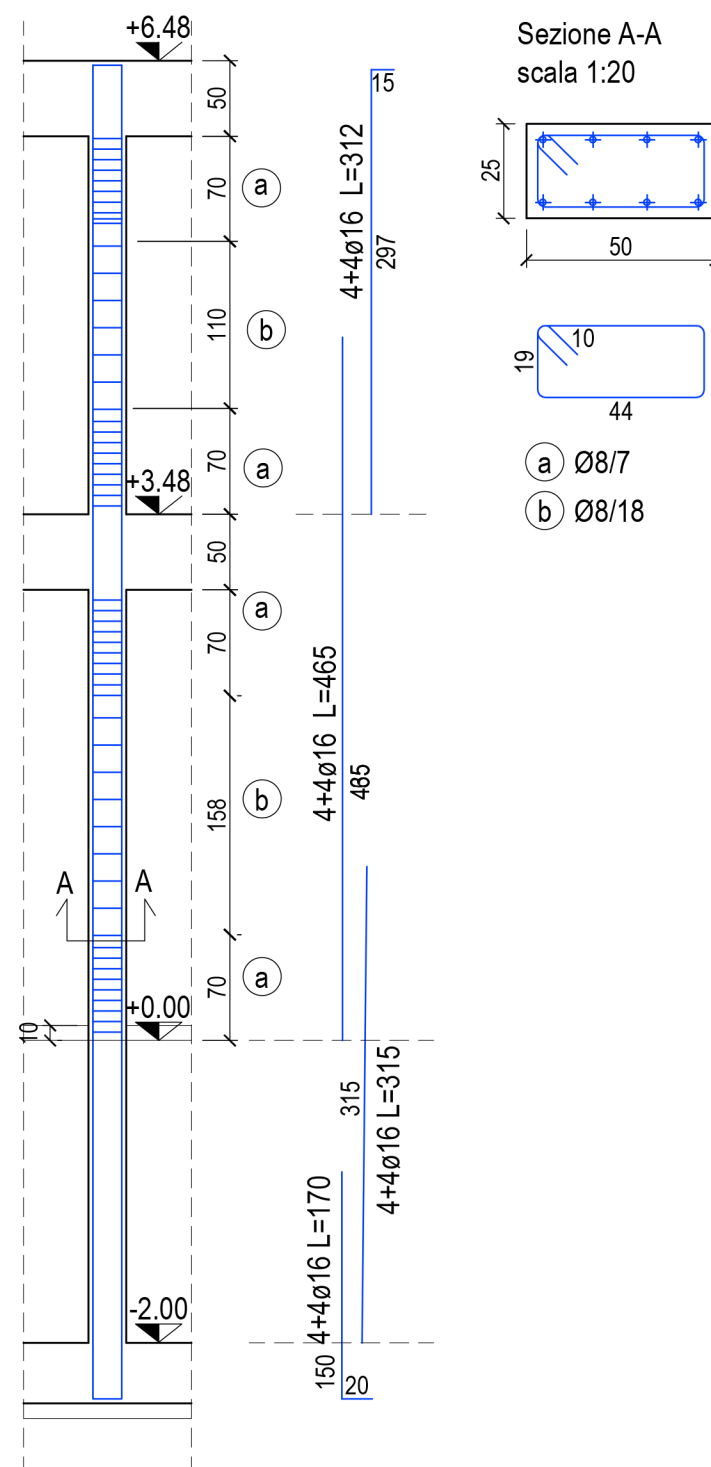
Scala 1:25



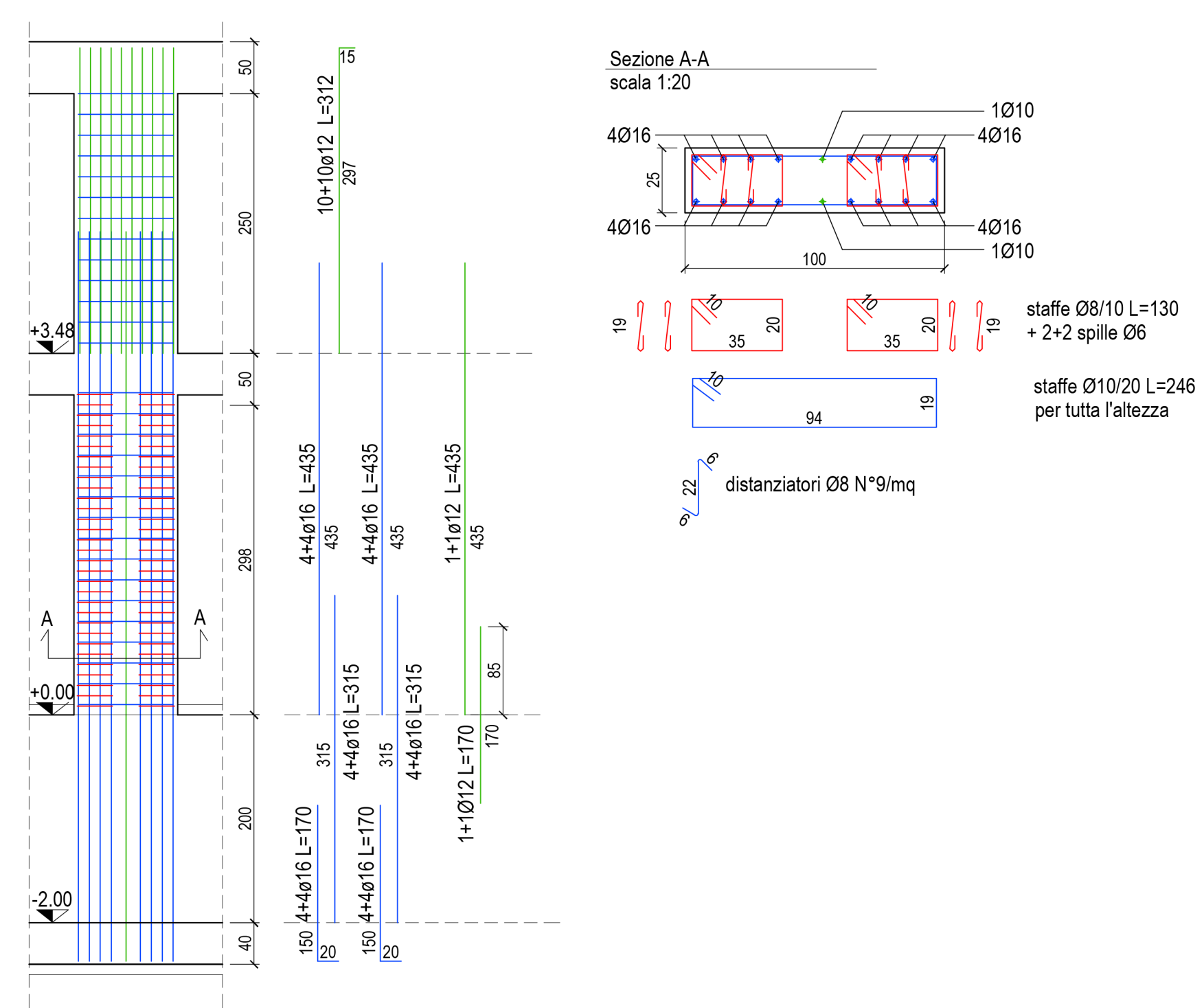
Scala 1:50



Scala 1:50



Scala 1:50



7) E' ASSOLUTAMENTE VIETATO AGGIUNGERE ACQUA IN CANTIERE AL CALCESTRUZZO.

B450C ($f_{yk} = 450 \text{ N/mm}^2$; $f_{uk} = 540 \text{ N/mm}^2$)